

Dear Parents and Carers,

Welcome to a new year at Vale View nursery. The nursery team are very much looking forward to working with both the children and yourselves this year and we have some exciting learning opportunities planned.



Who are we?

Miss Morgan: Nursery Teacher
Miss Watson: Teaching Assistant
Miss Ord: Nursery Practitioner
Miss Ulyatt: Nursery Practitioner

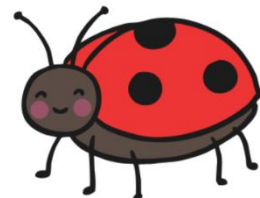
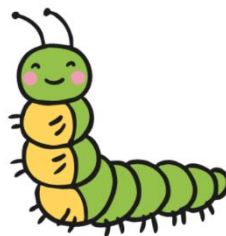
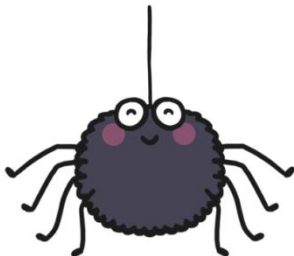
Key Groups

There are four Key Groups and your child will have their own Key Person within the setting. A list containing children in each Key Group is displayed by the door.

- Super Spiders (Miss Morgan)
- Brilliant Butterflies (Miss Watson)
- Clever Caterpillars (Miss Ord)
- Lovely Ladybirds (Miss Ulyatt)

Please note that if your child was attending nursery before the holidays, they may have changed key groups. Your child's key person will be getting to know you and your child over the next few weeks.

Unfortunately, Miss Ulyatt is not with us at the moment so if your child is in her Key Group (Lovely Ladybird's), please come to Miss Morgan with anything you wish to discuss.



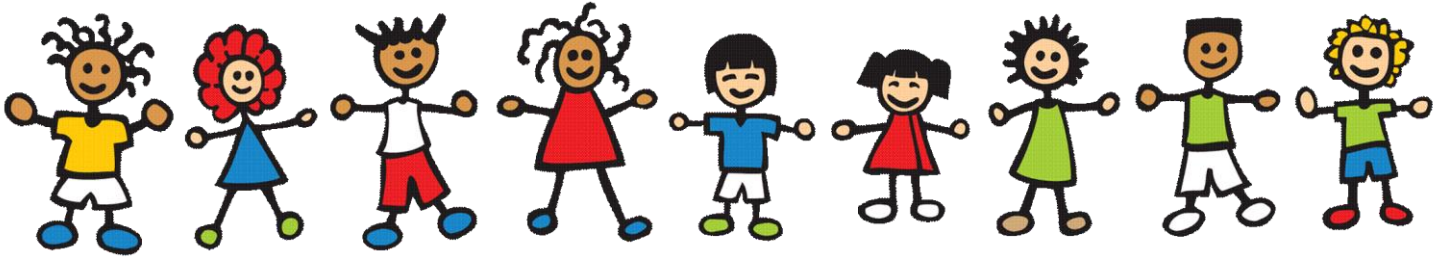
Session times:

Morning sessions: 8.45 - 11.45am

Afternoon sessions: 12.00 - 3.00pm

All day: 8.45 - 3.00pm

Please note that children can be left from 8.30am and must be collected by 3.00pm.



Learning at nursery

At nursery, we follow the Early Years Foundation Stage Curriculum. We observe and play alongside your children to see where their interests are and then we provide activities and experiences to enhance and develop their learning.

The Early Years Foundation Stage is made up of 7 areas of learning:

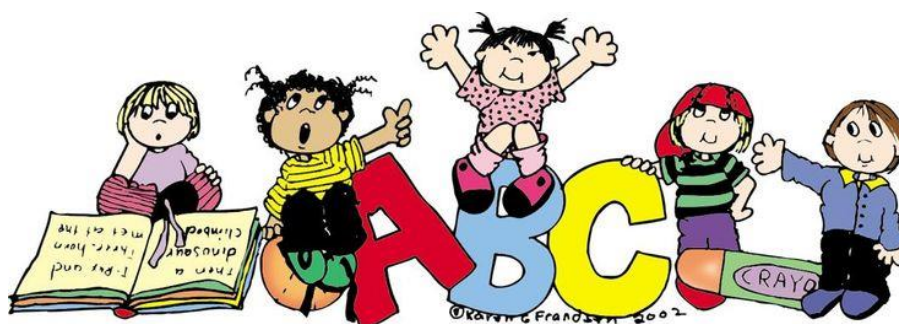
- Physical development
- Personal, social and emotional development
- Communication and language
- Literacy
- Maths
- Understanding the world
- Expressive art and design

We will ensure a broad coverage of all of these areas throughout the year.

Term 1 Topic - 'All About Me'.

This term, your child's learning will be based around them and all the fantastic things they are able to do. We will be learning all about ourselves, including our emotions, our bodies and our senses. We will also be learning about and discussing our families and special people and our homes and surrounding area (Landmarks). As well as this, there will be a focus on other personal and social aspects of learning such as forming positive relationships and behaviour and routine at nursery.

Please can you send in a photograph of your child with their family for displaying at nursery? We can take a photocopy of the photo if you only have one copy. Thank-you!



Interests

If your child is particularly interested in something at home or has done something at home that they have not done before, we would love to know about it. 'Star Moment' templates will be available on the parent notice board just inside of the nursery door. Please take as many as you like to fill in! Any 'Star Moments' returned to the nursery will be put into your child's learning journey folder.

As always, if you have any questions, please come and speak to a member of the team.

If you are unable to pick your child up from nursery: Please inform us of who will be picking them up. We cannot, for safety reasons, let your child go home with someone we do not know. Giving us a list of people who are allowed to pick your child up would be very helpful.

If you are going to be late picking up your child, please telephone the nursery as soon as you can to let us know.

Water: We will have drinking water and cups available to children all day at nursery. They will also get a drink at snack and lunchtime so they do not need to bring in their own water bottle.

School milk: All children at nursery are entitled to free school milk each day (although they can drink water if they prefer to). Milk will be offered at snack times.

Clothing: Please provide your child with a bag of spare clothes every day as we do like to get messy and accidents happen! Please can you also ensure that your child has a waterproof coat and wellies at nursery each day as we will be going outside whatever the weather!

Lunches: A hot meal can be provided for your child at a cost of £2.20 per day. Alternatively, your child can bring in a packed lunch from home.

HELP!

We are constantly seeking to enhance our learning environment. If you, or anybody you know, has any of the following items, they would be gratefully received: logs, bikes, dolls, plastic food, plastic play cooking utensils, an old non-working Hoover, small dust pan & brush, old non-working kettle, old non-working electrical gadgets, an old boat/canoe, locks, padlocks.



We are looking forward to this term and the new learning it will bring. Please feel free to talk to any member of the nursery team about any questions or concerns you may have.

