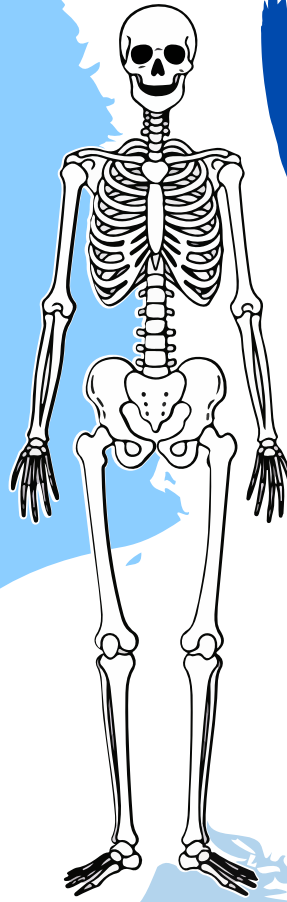


## Term 4

### Take a look inside

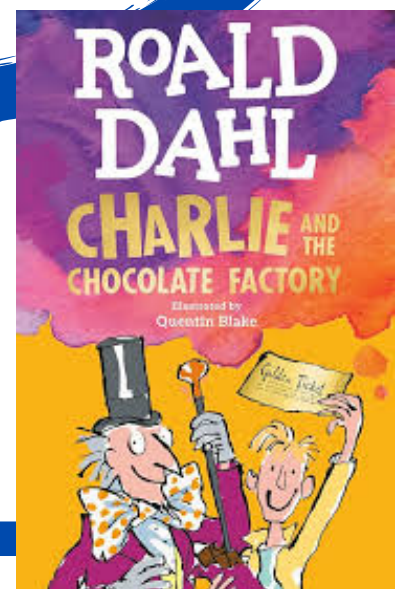
Our topic this term is 'Take a look inside'. The children will be exploring the fascinating world of the human body and the natural world around them. They will learn about bones and muscles, discover how animals are adapted to different biomes, and understand the importance of nutrition and staying healthy. Pupils will also study a range of animals from around the world, learning how their habitats, diets, and physical features help them to survive in different environments.

This topic will build strong scientific understanding while encouraging curiosity, enquiry and a deeper appreciation of how living things function and survive.



### English

This term we will be exploring the book *Charlie and the Chocolate Factory* by Roald Dahl, using it as inspiration to create descriptive narratives based on character, setting and description. Later in the term, we will produce an engaging explanation text based on an exciting new invention from the world of Willy Wonka.



### Maths

This term in maths, pupils will develop a secure understanding of fractions alongside learning about mass and capacity. They will explore how fractions are used to represent parts of a whole, compare and order them, and apply their knowledge in practical problem-solving situations. In addition, pupils will learn to measure, estimate and calculate using a range of real-life contexts.



$$\frac{1}{2}$$



### Reminders

Home learning will be set on Purple Mash every Friday; this will consist of one spelling activity alongside a math task based on our current or previous topic.

Children should read at least 3 times a week. Please sign in their reading record to confirm your child has read and ensure that your child brings this into school everyday. Children have their Purple Mash and Times Table Rock Stars login in their reading records.

PE this term is on a Tuesday, however this can vary, so PE kits need to be in school every day. Children need to be able to remove their own earrings for PE and must have long hair tied back.



I am available at the end of the day if you wish to discuss any questions or concerns. Alternatively, please use our class email address, which is

[blueclass@vale-view.kent.sch.uk](mailto:blueclass@vale-view.kent.sch.uk)

Miss Morrison